



The University of Nottingham



O C M U

MANSOURA & NOTTINGHAM BREAST PATHOLOGY MASTERCLASS

SCIENTIFIC PROGRAM

ONCOLOGY CENTER MANSOURA UNIVERSITY
BONE MARROW TRANSPLANT UNIT

A Dream

Is coming true



8TH

INTERNATIONAL CONFERENCE OF ONCOLOGY CENTER MANSOURA UNIVERSITY

OPTIMIZATION OF **CANCER MANAGEMENT**
IN EGYPT AND DEVELOPING COUNTRIES

OCMU

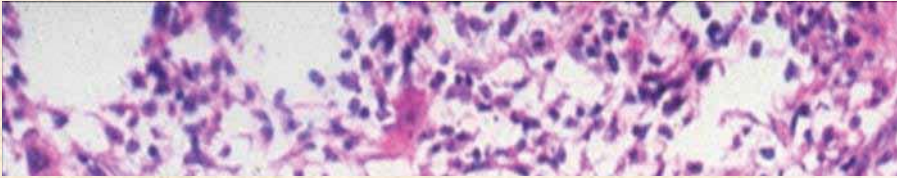
4TH - 6TH OCTOBER, 2018

www.ocmuconference.com



Hilton
HELIOPOLIS

● ● ● WELCOME MESSAGE



THE BREAST MASTERCLASS

is being held in Egypt On 4th & 5th October 2016

The Nottingham Breast Pathology Masterclass is a two-day course aiming to provide the opportunity for reporting breast pathologists in the UK to gain hands-on experience and update the knowledge and skills necessary to deal with routine and referral breast pathology service.

The course is run by the Nottingham Breast Pathologists and the faculty includes national and international experts in the field. The course includes lectures, microscopy sessions, online digital slides of rare cases and meet the expert sessions.

MANSOURA & NOTTINGHAM
BREAST PATHOLOGY MASTERCLASS

14 CPD POINTS HAVE BEEN ACCREDITED

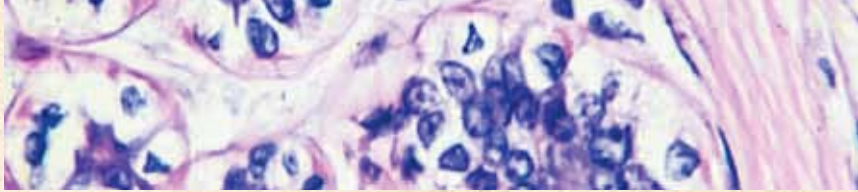
COURSE DIRECTORS

Prof. Enad Rakha

Prof. Khaled Zalata



ABOUT



Breast pathology is a rapidly developing discipline having crucial role in diagnosing breast diseases and in providing prognostic and predictive parameters that guide treatment decision.

This unique two day course aims to improve provision of routine breast pathology service in the UK. It is slanted towards practical diagnostic histopathology of breast disease with special emphasis on areas which pose diagnostic difficulties. The topics are chosen based on analysis of data from the Nottingham national referral centre and EQA performance and on personal communication with reporting pathologists in the UK.

The course includes talks on specific topics, given by eminent breast pathologists and a large collection of microscope slides of common and problematic conditions as well as unusual breast lesions with illustrated discussions



Prof. Vincenzo Eusebi

MD; FRCPath



BIOGRAPHY

Professor Eusebi is a professor of Pathology at the Università di Bologna, Italy since 1986. He is the director of the Service of Histopathology at Bellaria Hospital, University of Bologna, from 1989 to 2013 when he became Emeritus Professor. Director of the Department of Oncology at the same Hospital from 1997 to 2005, Chief of the Residency programme of the Histopathology Postgraduate School of the University of Bologna from 2005 to 2013. He is a Fellow of the Royal College of Pathology (GB) and Fellow of the Royal Society of Medicine (GB), Fellow of the Queensland Cancer Foundation. He is a member of several national and international societies of pathology, Managing Editor of Virchows Archiv till 2012 (Journal of the European Society of Pathology), Associate Editor of International Journal of Surgical Pathology, European Editor of Human Pathology and Member of the Editorial Boards of Am J SurgPathol; Applied Immunohistochemistry; Pathology Case Review; Seminars Diagnostic Pathology; Pathologica; Turkish Journal of Pathology; Asian Biomedicine. Professor Eusebi is a member of editorial scientific board of the WHO books of breast (2003 & 2012) and of endocinetumours (2004 & 2015). He is the coauthor with F. A. Tavassoli of the AFIP Atlas "Tumors of mammary gland." 2009. He published more than 300 publications in peer review journals and authored several book chapters, reviews and editorials.

SPEAKERS

MANSOURA & NOTTINGHAM
BREAST PATHOLOGY MASTERCOURSE





Prof. Emad Rakha



BIOGRAPHY

Professor of Breast Pathology and Honorary Consultant Pathologist, The University of Nottingham and Nottingham University Hospitals NHS Trust. Prof Rakha has authored over 290 peer-reviewed scientific publications, in addition to more than 26 chapters in medical and pathology textbooks in the field of breast disease. He is a leading member of the Nottingham Breast Pathology Research Group. He is member of the National Co-ordinating Committee for Breast Pathology (BIG18), UK PathSoc Committee, International society of Breast Pathology Committee, Breast Cancer Now Tissue bank Access Committee, Nottingham Health Science Biobank Board, The National Cancer Research Institute (NCRI) Breast CSG and its Translational Subgroup and the USCAP Review Board. Professor Rakha has been reporting breast referral cases in Nottingham since 2011, digital pathology to Lincoln Hospital and report breast cases to Source Bioscience plc. His current interest includelymphovascular invasion in breast cancer, molecular and genetic alteration and prediction of behaviour of DCIS and breast cancer computational pathology and imaging technology.





Prof. Elena Provenzano



BIOGRAPHY

Dr. Elena Provenzano is Lead Breast Histopathologist for the Cambridge Breast Unit at Addenbrooke's Hospital. Elena completed her pathology training in Melbourne, Australia, including a Ph.D. looking at biological markers of recurrence in DCIS. Her current role combines clinical work and research. Elena is the lead pathologist for several research projects in breast cancer with primary interest in the translational aspect of clinical trials particularly in the neoadjuvant setting. Current trials include ARTEMIS, PARTNER, PRIMETIME and Neo-RT clinical trials in Addenbrooke's Hospital. DrProvenzano is also local pathologist for the SEARCH and METABRIC studies. She is also regional QA pathologist for the East of England. She lectures in many breast pathology courses and scientific meetings and she publishes in high profile peer reviewed journals, contributes to writing of UK guidelines and book chapters in pathology textbooks.

SPEAKERS

MANSOURA & NOTTINGHAM
BREAST PATHOLOGY MASTERCLASS



ORGANIZING COMMITTEE:

Prof. Ahmed Setit
Prof. Khaled Zalata
Prof. Maha El Zaafarany
Prof. Dena Tantawy
Prof. Mai Halka
Prof. Hany Onsy

MANSOURA & NOTTINGHAM
BREAST PATHOLOGY MASTERCLASS

MANSOURA & NOTTINGHAM BREAST PATHOLOGY MASTERCLASS

4th - 5th October 2018

SCIENTIFIC PROGRAM

What reporting breast pathologists need to know Specimen handling in breast lesions IHC in breast pathology; applications and pitfalls Diagnostic pitfalls and hot topics in breast pathology Papillary, Fibroepithelial and spindle cell lesions Molecular and digital breast pathology update Meet the expert sessions Microscopy Workshops: Digital slides will be available online

WHO SHOULD ATTEND:

Practising pathologists, pathology fellows and trainees
The course is granted 14 CPD points

For Further information and to Register please see

www.ocmuconference.com

2 days course – Registration fee includes educational materials, coffee and lunch



Day 1 Thursday 4th October, 2018

Hall D

T I M E

Challenging Breast Lesions

08.30 – 09:15

Registration & Coffee Break

09.20 – 09:30

Welcome

**Khalid Zalata
Emad Rakha**

09.30 – 12:00

Chairpersons:

- **Ahmed El Habashi**
- **Elia Anees**
- **Ibrahim El Desoki**
- **Manal El Mahdi**

09.30 – 10:10

Immunohistochemistry in breast pathology:
when does it help? Applications and challenges **Emad Rakha**

10.10 – 10:20

Discussion

10.20 – 11:00

Challenging breast lesions: Spindle Cell lesions **Vincenzo Eusebi**

11.00 – 11:10

Discussion

11.10 – 11:50

Challenging breast lesions: Papillary Lesions

11.50 – 12:00

Discussion

Chairpersons:

- **Ali Hendawi**
- **Elena Provenzano**
- **Emad Rakha**
- **Vincenzo Eusebi**

12:00 – 12:45

Slide Seminar 1:
View of the cases and case discussion **Vincenzo Eusebi
Emad Rakha
Elena Provenzano**

13:00 – 14:00

Coffee Break

**MANSOURA & NOTTINGHAM
BREAST PATHOLOGY MASTERCLASS**



T I M E

Day 1 Thursday 4th October, 2018

Challenging Breast Lesions

Hall D

Chairpersons:

- Hany Khattab
- Maha El Zaafarany
- Hayam Ayad
- Nadia Atwan

14:00 – 14:45

Challenging breast lesions:
Fibroepithelial lesions

Vincenzo Eusebi

14:45 – 15:30

Speciman Handling including
Neoadjuvant Treated Cases

Elena Provenzano

15:30 – 16:00

Lessons from 25 years of UK national
breast EQA scheme experience.

Emad Rakha

Chairpersons:

- Elena Provenzano
- Soliman Saba
- Emad Rakha
- Vincenzo Eusebi

16:00 – 16:40

Slide Seminar 2: View of the cases and case discussion

Vincenzo Eusebi
Emad Rakha
Elena Provenzano

16:40 – 17:30

Pitfalls in breast Pathology :
Receptor assessment in breast cancer

17:30

Meet the experts and discussion and Closing



Day 2 Friday 5th October, 2018

Hall D

T I M E

Keys issues of Clinical Relevance in Breast Pathology

09.00 – 09:30

Registration

09.20 – 09:30

Chairpersons:

- Fatma El Hoseny
- Mohamed Hegazy
- Nadia Nada
- Sameh Shamaa

09:30 – 11:15

Session 1

Keys issues of Clinical Relevance in Breast Pathology

Vincenzo Eusebi
Emad Rakha
Elena Provenzano

11:15 – 12:00

Chairpersons:

- Amro El Sebai
- Elena Provenzano
- Emad Rakha
- Vincenzo Eusebi

Slide Seminar 3:

view of the cases and case discussion An update on digital
 Pathology of breast cancer and referral practice

12:00 – 13:30

Coffee Break & Friday Prayer

MANSOURA & NOTTINGHAM
BREAST PATHOLOGY MASTERCLASS



T I M E

Day 2 Friday 5th October, 2018

Keys issues of Clinical Relevance in Breast Pathology

Hall D

Chairpersons:

- Ahmed Setit
- Maha Abo Hashem
- Osama Helmi
- Ibraheim El Shawaf
- Maha Amen

13:30 – 15:30

Session 2

Keys issues of Clinical Relevance in Breast Pathology

Emad Rakha
Elena Provenzano

15:30 – 17:00

Chairpersons:

- Elena Provenzano
- Nafesa El Badawi
- Emad Rakha
- Vincenzo Eusebi

15:30 – 16:10

Slide Seminar 2: View of the cases and case discussion

Vincenzo Eusebi
Emad Rakha
Elena Provenzano

16:10 – 16:45

An update on the molecular pathology of breast Cancer

Emad Rakha

17:00

Close

MANSOURA & NOTTINGHAM
BREAST PATHOLOGY MASTERCOURSE



T I M E

Day 2 Friday 5th October, 2018

Keys issues of Clinical Relevance in Breast Pathology

Hall D

Slide seminars: 3 hours in two days: Discussion of cases circulated as online material (2 weeks prior to the course) with likely differentials. Discussion of interesting cases with expert approach to diagnosis using microscope and a projection screen and PowerPoint presentation

*** Session1:**

- **VE:** Salivary gland like tumors of the breast.
- **EP:** Minimum datasets of the breast and UK National guidelines.
- **VE :** Rare breast cancer subtypes.
- **ER:** Why should we grade breast cancer .
- **General Discussion .**

*** Session2:**

- **EP:** Current and future methods to predict response to chemotherapy.
- **EV:** Benign mimics of malignancy.
- **EP :** Sentinel Node biopsy and axillary dissection reporting and staging .
- **ER:** Practical tips: Dealing with sub-optimally fixed specimens, oncoplasic specimen, robust measuring of tumour size.
- **EP:** Breast cancer heterogeneity – what does it mean? How to assess?

25 Minutes
 25 Minutes
 20 Minutes
 20 Minutes
 15 Minutes

20 Minutes

20 Minutes
 20 Minutes

20 Minutes

20 Minutes

MANSOURA & NOTTINGHAM
 BREAST PATHOLOGY MASTERCLASS



●●● SPONSORS



ThermoFisher
SCIENTIFIC

invitrogen



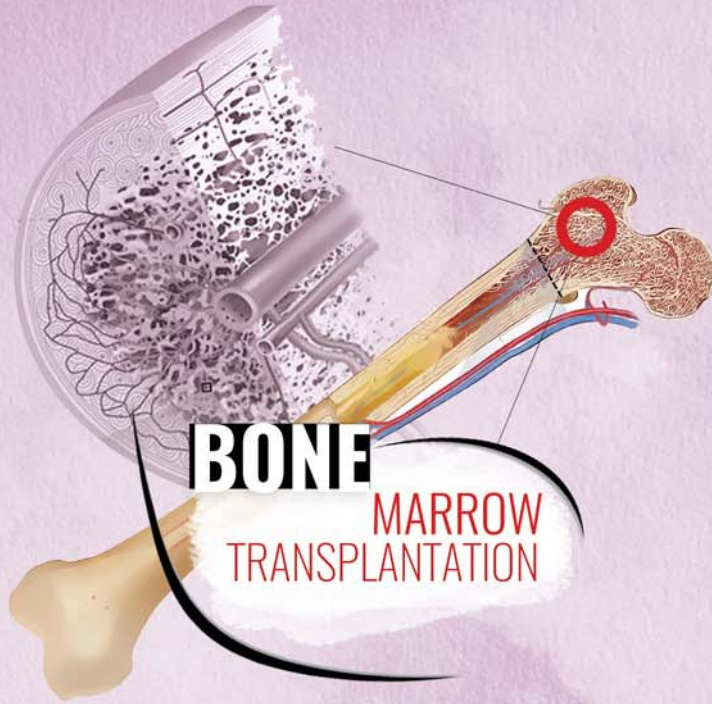
Leica
Geosystems

Life Trade - Egypt



Sponsors





BONE
MARROW
TRANSPLANTATION



MAIN OFFICE

17 (A) OBOUR BUILDINGS,
 SALAH SALEM ROAD, **CAIRO - EGYPT**

CONFERENCE RESPONSIBLE
MR. MOHAMED OSAMA
 Mobile:+(2)01113822293
 Email: m.osama@ccg-eg.org

EXECUTIVE MANAGER
MRS. WALAA ISMAIL
 Mobile:+(2)01117719888
 wala.ismail@ccg-eg.org
 info@ccg-eg.org

UAE OFFICE

BUSINESS BAY – AL MANARA TOWER
 FLOOR 29 OFFICE 2902, **DUBAI – UAE**

EXECUTIVE MANAGER
MR. YASSER HUSSEIN
 Mobile: + 971 55 9727 666
 Tel/Fax:+ 971 4 321 8987
 yasser.younes@ccg-eg.org
 uae@ccg-eg.org